



*For Aesthetic Brackets*

# Technique Guide

(Side 1)

## Step 1



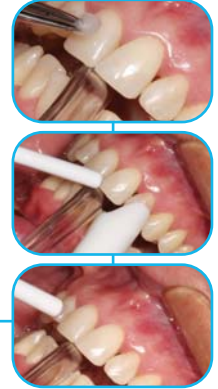
Apply **very thin** coat of Ortho Solo™ to the prepared tooth.

## Tooth Preparation

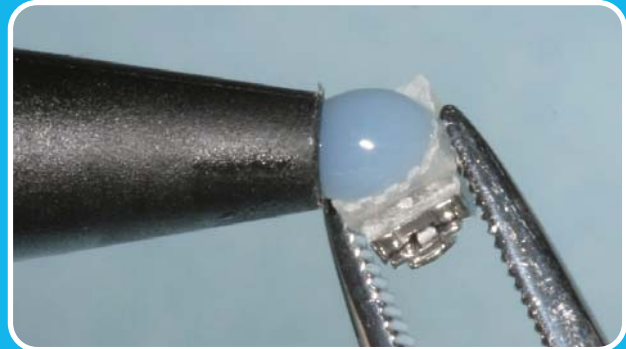
**Etch** approximately 30 seconds per tooth (one arch at a time).

**Rinse** thoroughly for a minimum of 5 seconds per tooth with a forceful air/water spray and suction using a high-speed evacuator.

**Dry** etched enamel with clean, dry air. Inspect to ensure a uniform, dull, frosty appearance.



## Step 2



Extrude small amount of blūgloo adhesive paste onto the bracket pad. Wear gloves when handling this product.

## Technique Guide

(Side 2)

### Step 3

- (A) Immediately place bracket,
- (B) position,
- (C) press firmly,
- (D) remove excess adhesive.

Note: Finalize position and begin light curing within 1 minute. Blue color will disappear when adhesive approaches body temperature.

### Step 4

Light Cure:

- 10-15 seconds for clear brackets
- 20 seconds for metal brackets
- 30 seconds for molars due to increased pad size.

### Cleanup Feature:

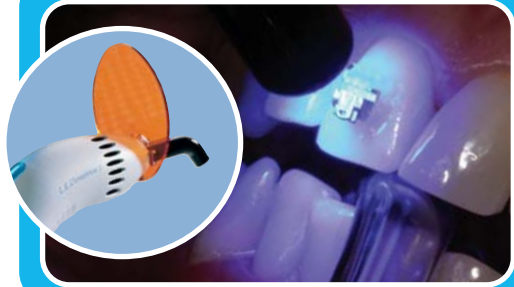
(A) To easily see and remove any remaining blüglöo adhesive after debonding, cool the adhesive with short blasts of air or water to revert it back to its original blue color.

(B) Remove remaining blüglöo adhesive with high or low-speed carbide burs followed by sandpaper discs and a polishing cup or paste.

## Step 3



## Step 4



## Cleanup Feature

